

WOODFORD



**NORTHWEST PIPE FITTINGS, INC
OF SCOTTSBLUFF, NE**

YARD & WALL HYDRANTS

COMPUTER #	DESCRIPTION	
YARD HYDRANTS		
404-2704	Y-1 1"X5' BURY YARD HYDRANT	
404-2836	Y34 3/4"X3' BURY YARD HYDRANT	
404-2852	Y34 3/4"X4' BURY YARD HYDRANT	
404-2878	Y34 3/4"X5' BURY YARD HYDRANT	



Y34 - Y1

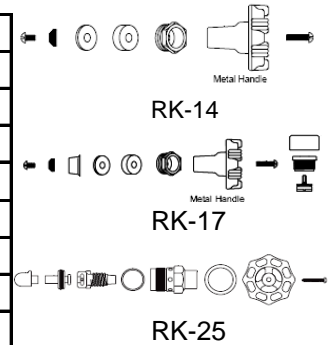
WALL HYDRANTS		
404-0494	17P 10" WALL FAUCET	
404-0496	17P 12" WALL FAUCET	
404-0498	17P 14" WALL FAUCET	



Model 17
Anti-Siphon
ASSE 1019-C

REPAIR PARTS FOR WALL HYDRANTS

404-2300	RK-14 REPAIR KIT F/ 14-18	
404-2304	RK-17 REPAIR KIT F/ 17	
404-2308	RK-25 REPAIR KIT F/ 20-25-27	
404-2400	RK-14/17MH METAL HANDLES ONLY	
REPAIR PARTS FOR YARD HYDRANTS		
404-2600	RK-Y34 HYD REPAIR KIT F/Y34 HYD	
404-3678	10011 WOODFORD CPLG F-Y34	
404-4090	10101 PACKING F/Y34,Y1	
404-4138	10105 PLUNGER UNIT F/Y34	
404-4444	15001 1" HYDRANT HEAD F/Y34	
404-4460	15003 3/4" HYDRANT HEAD F/Y34	



WOODFORD MANUFACTURING COMPANY

WWW.WOODFORDMFG.COM



SPECIFICATIONS FOR 17 SERIES

ASSE Standard 1019 -Type C Approved --**BOCA-ES** - See research report No. 96-69 -- **IAPMO** Listed

NOZZLE - 3/4" male hose thread

Permanent stainless steel seat - Will not wire draw

EPDM PACKING - To prevent leaking

VALVE OPERATING THREADS - Full circle threads on valve body and retainer.

NO LEAD SOLDER - All solder joints.

SEAT WASHER - Standard "O" size.

ADJUSTABLE FLANGE, VACUUM BREAKER CAP & BODY - Polycarbonate

Metal handle - Powder Coated Die Cast Aluminum - **Optional**- Removable Tee Key (extra cost)..

NOTICE: Models 14,17, 22, V22 come standard with the MH (Metal Handle).

MAX PRESSURE - 125 psi

MAX TEMPERATURE - 120 degrees F

Warning - Faucet must be installed with downward pitch toward nozzle and hose must be removed in freezing weather or faucet may freeze and burst.

This product is tested and listed to an ASSE standard. The standard states that this product is not intended to be used for over 12 hours of continuous use.

Specifications	
Model Y34	Model Y1
INLET – ¾" N.P.T.	INLET – 1" N.P.T
CASING – 1" galvanized steel pipe	CASING – 1¼" galvanized steel pipe
OPERATING ROD – 3/8" galvanized steel pipe	OPERATING ROD – 3/8" galvanized steel pipe
DRAIN HOLE – Tapped – 1/8" N.P.T	DRAIN HOLE – Tapped – 1/8" N.P.T
BRASS NOZZLE – ¾" male hose thread	BRASS NOZZLE – ¾" male hose thread
OPTIONAL - (At additional cost) 1" brass pipe outer casing; 3/8" brass pipe operating rod; 1" hose nozzle (10007)	OPTIONAL - (At additional cost) 1" hose nozzle (10007)
MAX PRESSURE - 125 p.s.i.	MAX TEMPERATURE - 120 degrees F.